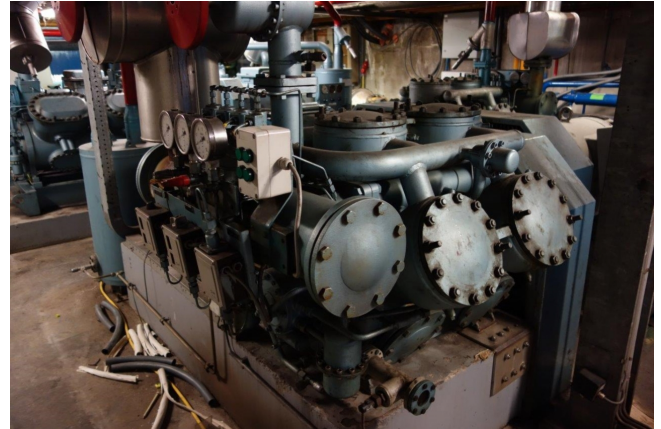


Grasso RC 611

Specifications

Brand	Grasso
Type	RC 611
Refrigerant	NH 3 (ammonia)
kW at 0°C/+40°C	662,7
kW at -5°C/+40°C	532
kW at -10°C/+40°C	418,4
Unloaded Start	✓
Capacity Control	✓
On steel base frame	✓
Pressure safety switches	✓
Hp/Lp/Op	
Pressure gauges	✓
Hp/Lp/Op	
Oil separator	✓
Remarks	# // Including Electromotor // Pulley Compr: 720
Sizes	1600x1100x1400 mm (LxWxH)
Stock	1



Description

Used Grasso RC 611

